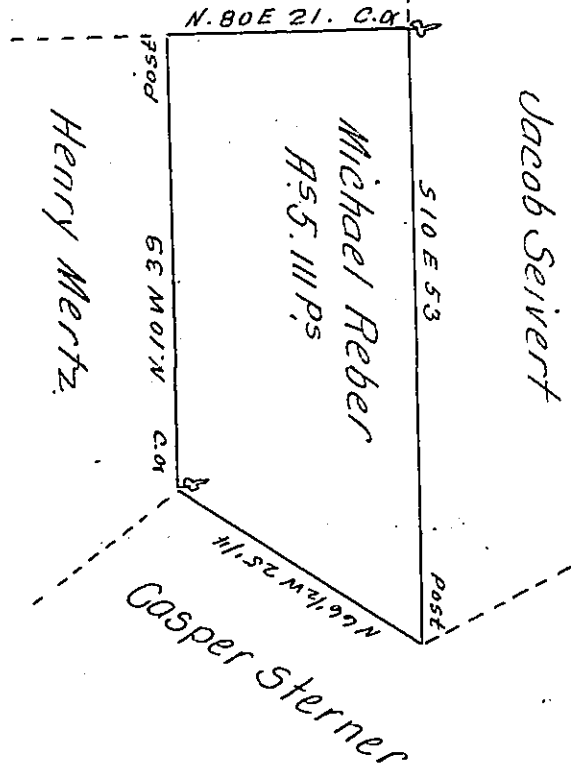


Theobald Bieber
late
Gasper Repp.



Situate in Rockland township, Berks County. Cont. 9 Five acres, one hundred and eleven perches and allow $\frac{2}{3}$ of 6th C^t. Surveyed on a Warrant dated September 6th A.D. 1776 granted to Michael Reber. Copied from Henry Vanderslice's Survey. September 30th 1828.

Gabriel Hiester, Esq^r.
Surveyor General

Matthias S. Richards D. S.

IN TESTIMONY that the above is a copy of the original remaining on file in the Department of Internal Affairs of Pennsylvania, made conformably to an Act of Assembly approved the 16th day of February, 1833, I have hereunto set my Hand and caused the Seal of said Department to be affixed at Harrisburg, this twelfth day of September 1906.

Lea C. Brown
Secretary of Internal Affairs.